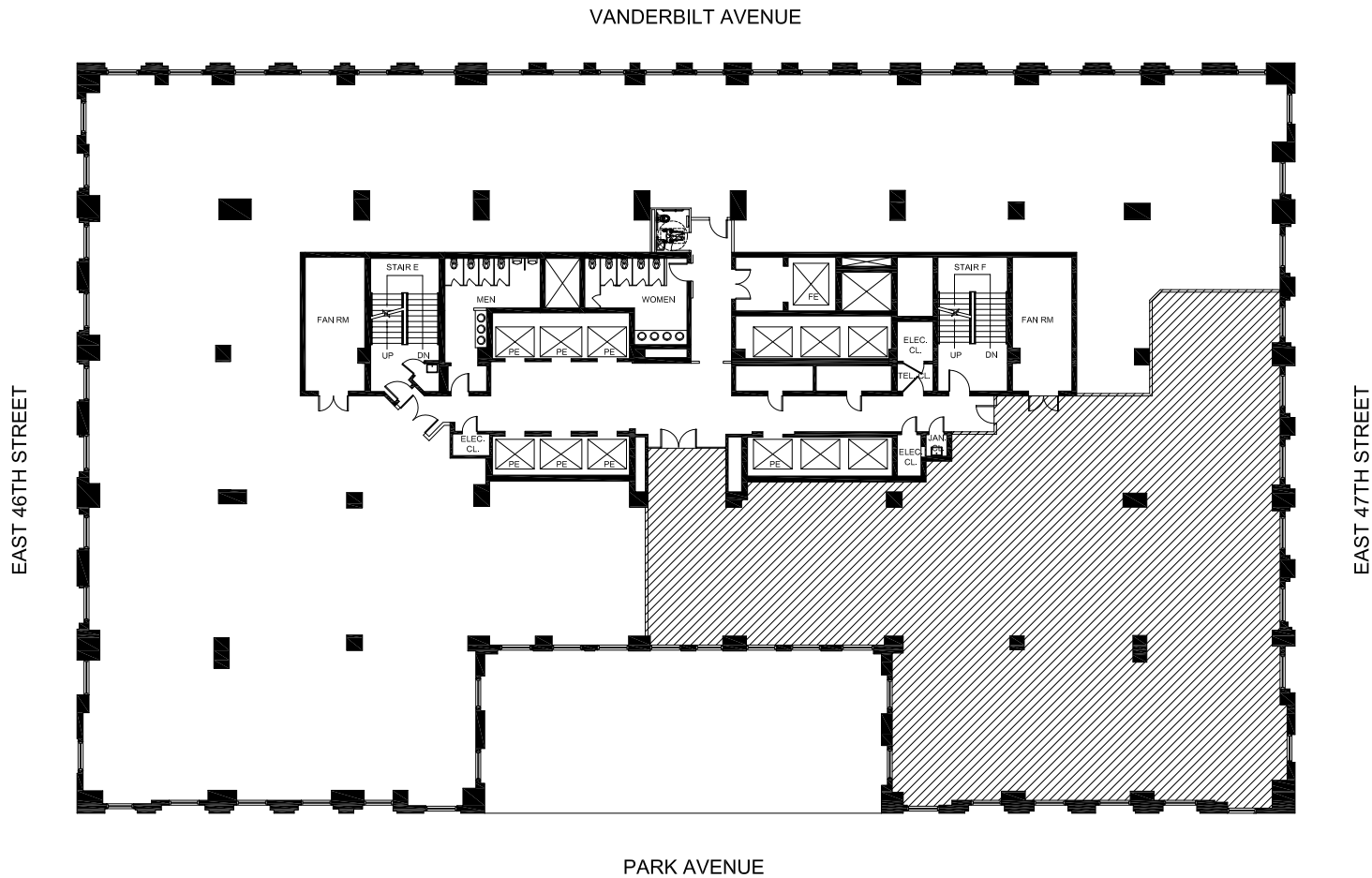


CORE & SHELL

PARTIAL 6TH FLOOR 19,853 RSF

AVAILABLE 1/1/20



250parkave.com

David L. Hoffman Jr. | 212.318.9767 | David.Hoffman@cushwake.com

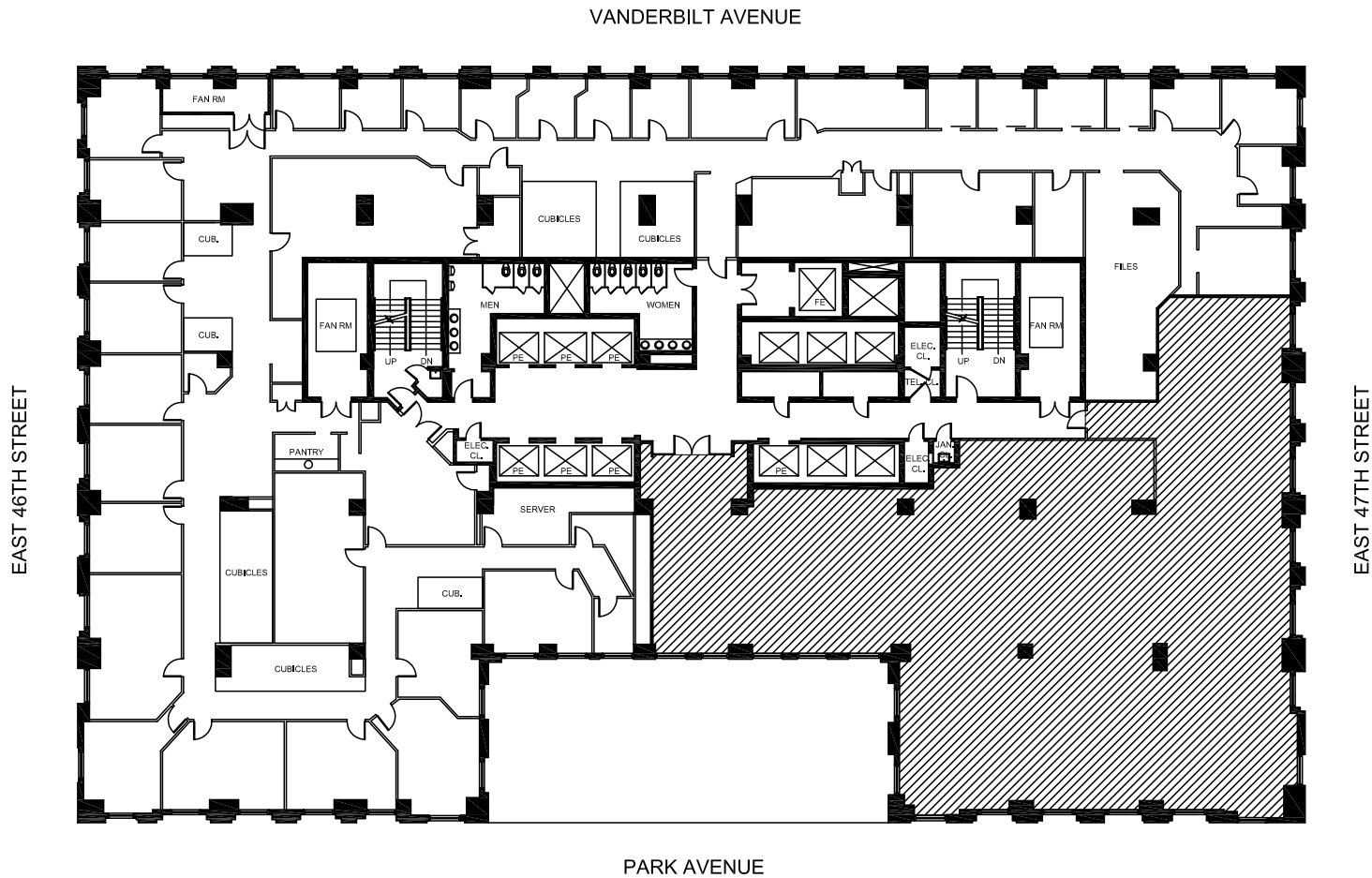
Whitnee Williams | 212.954.0920 | Whitnee.Williams@cushwake.com

250
PARK AVENUE

AS BUILT

PARTIAL 6TH FLOOR 19,853 RSF

AVAILABLE 1/1/20



250parkave.com

David L. Hoffman Jr. | 212.318.9767 | David.Hoffman@cushwake.com

Whitnee Williams | 212.954.0920 | Whitnee.Williams@cushwake.com

250
PARK AVENUE