

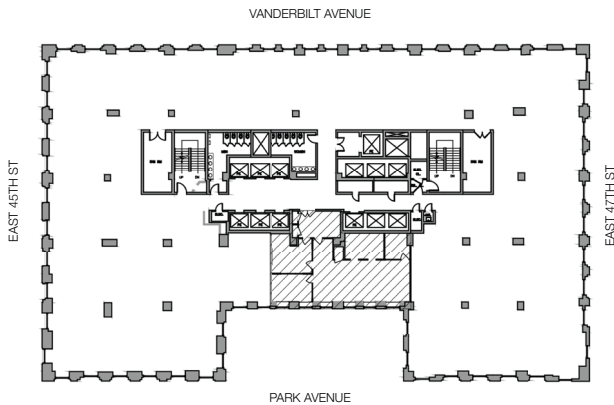
PARTIAL 9TH FLOOR

SUITE 911 – 2,436 RSF

Available 6/1/2023



LEGEND	
RECEPTION	1
OFFICE	2
CONF. ROOM (8)	1
HOT DESK	2
BENCH DESK 4'	14
PANTRY	1
COPY AREA	1
IT CLOSET	1
STORAGE CLOSET	1
COAT CLOSET	1



250parkave.com

David L. Hoffman Jr. | 212.318.9767 | David.Hoffman@cushwake.com

Whitnee Williams | 212.954.0920 | Whitnee.Williams@cushwake.com

250
PARK AVENUE